

# GroupTreeView

v.4.0

for ACT! 2005

Another efficient and affordable ACT! Add-On by

**e<sup>x</sup>ponencial**

<http://www.exponencial.com>

---

## **Table of contents**

---

Purpose of the add-on .....	3
Installation procedure .....	3
Adding icons to other views .....	3
The main screen.....	4
How to create a lookup of contacts belonging to a group .....	4
How to create a lookup of contacts belonging to a group .....	5
How to go to a group .....	5
Support.....	5

---

## Purpose of the add-on

---

This add-on creates a tree view of your group structure and allows to quickly go to a group or create a lookup of the contacts belonging to a group.

---

## Installation procedure

---

Download the program file from our [download page](#) and double-click it to start the installation.

An icon should have been added to your contact toolbar to launch GroupTreeView directly from within ACT!.

Note that contrarily to versions supporting previous ACT! versions and because of the changes in ACT!, add-ons are now DLL files and not executable files. This means that they are automatically initialized by ACT! when placed in ACT! plugin folder (a subfolder of the main ACT! directory) and cannot be started from the Windows Start menu anymore. This is why you are not given a choice of installation directory during the installation process.

---

## Adding icons to other views

---

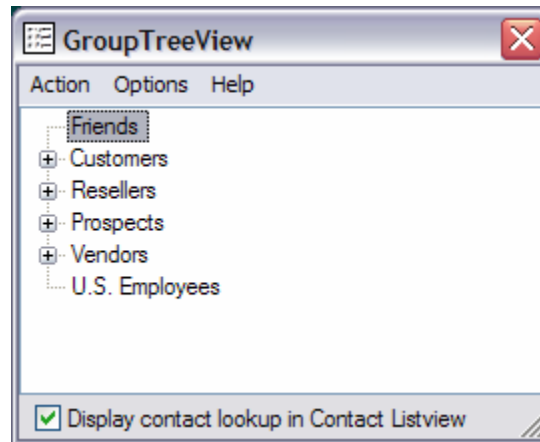
To add icons to other toolbars, run GroupTreeView and go to the *Options, Integrate with ACT!* menu. Check the views you want to add icons to and restart ACT!.

When ACT! re-starts, whatever icons you asked to be created should be there to launch Excel Templates.

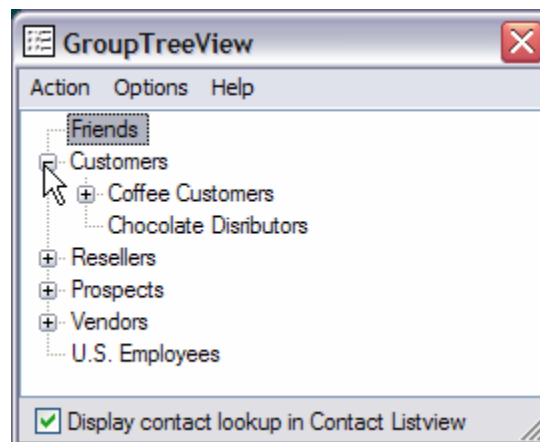
## The main screen

---

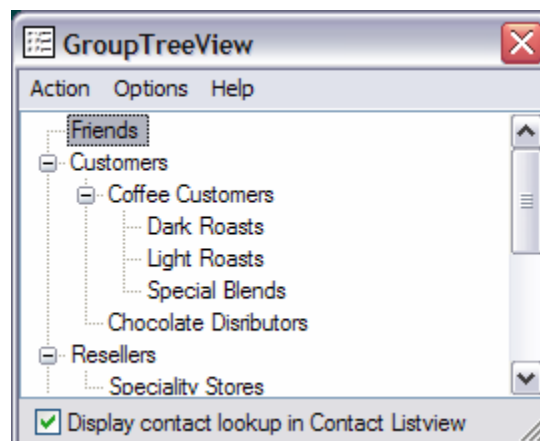
When you launch the add-on, your groups are shown in a treeview:



Click the + buttons to expand sub-nodes:



NOTE: If you want all branches to be extended at startup, go to the *Options > Settings* menu and the next time you start *GroupTreeView*, all sub-nodes will show:



---

## How to create a lookup of contacts belonging to a group

---

Select the group you want to create a lookup for and:

- Double-click it or,
- Right-click it and choose *Go to group* or,
- Use the *Action > Go To group* command

---

## How to go to a group

---

Select the group you want to go to and either:

- Double-click it while holding the CTRL key or,
- Right-click it and choose *Go to group* or,
- Use the *Action > Go To group* command

---

## Support

---

For support, please go to <http://www.exponencial.com/support.php>

NOTE: This add-on is freeware. We invite you to support us by also buying our efficient and affordable add-ons so that we can continue to produce freeware!