

Advanced Layout Tools

Graphics Pack

v.4.0

for ACT! 2005

Another efficient and affordable ACT! Add-On by



<http://www.exponencial.com>

Table of content

Purpose of the add-on	3
Installation procedure	3
How to add a tool to your layout toolbar.....	4
How to add a control to your layout	4
How to add a control to your layout	5
Editing the properties of your controls	5
The ChartBar.....	6
Adding the ChartBar to your layouts.....	7
Modifying the appearance of the ChartBar.....	7
The DoNotMonitor property.....	7
The Progressbar	8
Modifying the appearance of the Progressbar	8
The DoNotMonitor property.....	9
The Gauge	9
Maximum and Minimum Values.....	9
Color zones	10
Modifying the appearance of the Gauge.....	10
Registering your product	11
Support	11

Purpose of the add-on

Advanced Layout Tools – Graphics Pack is a set of two controls that are designed to draw ACT! users attention to certain field values for better management of their contact relationship.

Installation procedure

Download the program file from our [download page](#) and double-click it to start the installation.

Due to the nature of the add-on, there is no interface nor icons added to your toolbar: it consists of a set of tools for your layouts.

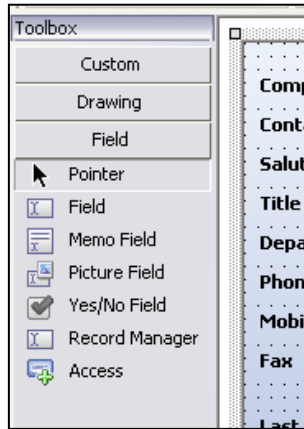
Note that contrarily to versions supporting previous ACT! versions and because of the changes in ACT!, add-ons are now DLL files and not executable files. This means that they are automatically initialized by ACT! when placed in ACT! plugin folder (a subfolder of the main ACT! directory) and cannot be started from the Windows Start menu anymore. This is why you are not given a choice of installation directory during the installation process.

GENERAL INFORMATION REGARDING ADVANCED LAYOUT TOOLS

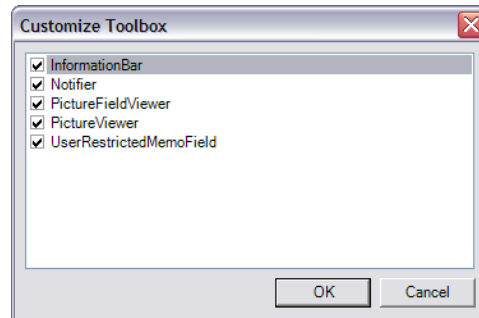
This section applies to all Advanced Layout Tools packs.

How to add a tool to your layout toolbar

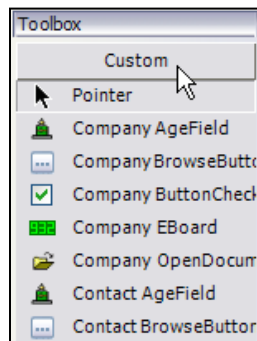
When in ACT! Design Layout mode, if the toolbox is not visible, go to the *View* menu and click *Toolbar*.



Do a right-click on the toolbox and choose *Customize...* A list of available tools is displayed. Check the ones you want to add to the toolbar.



They will be added under the *Custom* tab. To view them click on *Custom*.



How to add a control to your layout

The tools you add to the *Custom* tab of your toolbar allow you to add controls to your layouts. To add a control, use the same method you use to add regular ACT! fields:

- Click the tool in the toolbar
- Then click somewhere in the layout and drag to expand.
- When you release the button of your mouse, the control is inserted in your layout.
- For controls that are tied to a field, a *Select field* window will popup. Choose a field then click OK.

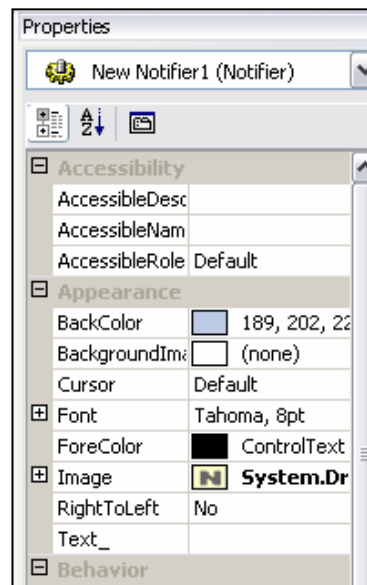
IMPORTANT!

If a tool name starts with *Contact_*, *Group_* or *Company_*, it means that it is specific to a type of layout. Inserting a specific control to the wrong layout will generate errors when using it.

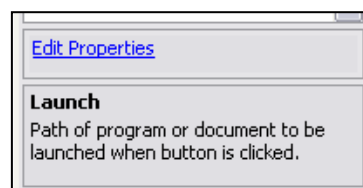
Editing the properties of your controls

In ACT! Layout designer window, if you right-click a control, the pop-up menu lists a *Properties* command which opens a window giving you the ability to edit very few properties.

To really access all properties of a control, select the control then press F4. The property editor will open giving you the ability to fully control the appearance and behavior of your control.



There are many properties you can tweak. If you do not know what a property does, select it then look at the bottom of the properties widow for the description.

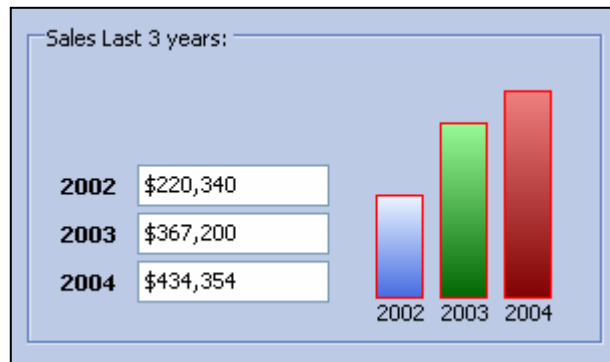


THE TOOLS INCLUDED IN THIS PACK

The ChartBar

The ChartBar is a control designed to illustrate a value contained in the field it is bound to (a numeric field ie. number, decimal or currency). The best way to explain how the ChartBar works is to look at an example.

Here we added 3 ChartBars to visualize the sales history of our contacts.

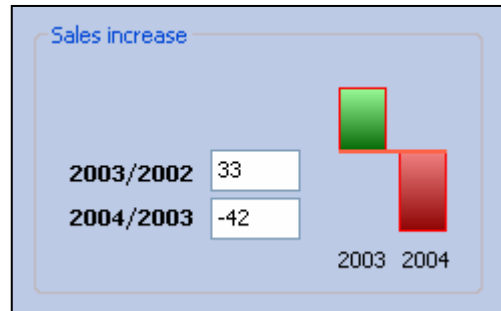


Here are the properties of the “2004” bar above.

Appearance	
BackColor	189, 202, 229
BackgroundImage	(none)
BorderStyle	None
Cursor	Default
DrawEdges	True
EdgeColor	Red
Fill	Vertical
Font	Tahoma, 8pt
ForeColor	ControlText
NegativeGradientFill1	LightCoral
NegativeGradientFill2	DarkRed
PositiveGradientFill1	LightCoral
PositiveGradientFill2	DarkRed
ShowPercent	False
Style	Vertical
Behavior	
DoNotMonitorField	True
Enabled	True
Maximum	100
Minimum	0
TabIndex	66
TabStop	False
Visible	True

The ChartBar needs to be given a minimum and maximum value.

Note that you may have positive and negative values. You just have to define a negative minimum value. Below we have a maximum value of 50 and a minimum value of -50.



Adding the ChartBar to your layouts

See the first section of this user’s manual to see how to add a tool to your Layout toolbox and how to add controls to your layouts. Here is more specific information regarding the ChartBar.

When adding the ChartBar to your layout, you are prompted to select a field. This field will be the one that the ChartBar will illustrate.

You may insert as many Notifiers as you want in one layout.

Modifying the appearance of the ChartBar

There are numerous properties that allow to change the appearance of a ChartBar. They are listed under the Appearance section of the Properties window.

Note that there is a Style property that controls the direction of the bar: either vertical or horizontal.

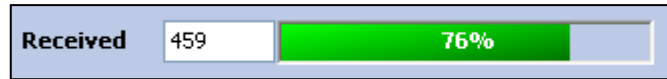
The DoNotMonitor property

The ChartBar may monitor the value of the field it is bound to and adjusts itself automatically when the field value changes. If you rarely change the value of the monitored field, set this property to true and the control will only refresh itself when the record is changed. You might save a (tiny) bit of computer resources.







The Progressbar

The Progressbar control is slightly different. Also bound to a numeric field (number, decimal or currency), it displays a bar showing how the value contained in a field represents compares to a maximum value. The minimum value is always 0.

Here is a Progressbar example.



The Progressbar has several important properties for its appearance. Here are the properties for the above.

Appearance	
BackColor	 189, 202, 229
BackgroundImage	 (none)
BorderStyle	Fixed3D
Cursor	Default
DrawEdges	False
EdgeColor	 Black
Fill	ForwardDiagonal
Font	Tahoma, 8.25pt, style=Bc
ForeColor	 White
GradientFill1	 Lime
GradientFill2	 DarkGreen
RightToLeft	No
ShowPercent	True
Style	Horizontal
Behavior	
DoNotMonitorField	False
Enabled	True
ImeMode	NoControl
Maximum	100
TabIndex	67
TabStop	False
Visible	True

Modifying the appearance of the Progressbar

There are numerous properties that allow to change the appearance of a Progressbar. They are listed under the *Appearance* section of the *Properties* window.

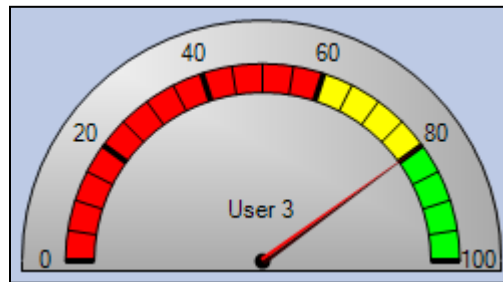
Note that there is a *Style* property that controls the direction of the bar: either vertical or horizontal.

The DoNotMonitor property

The Progressbar may monitor the value of the field it is bound to and adjusts itself automatically when the field value changes. If you rarely change the value of the monitored field, set this property to true and the control will only refresh itself when the record is changed. You might save a (tiny) bit of computer resources.

The Gauge

The Gauge control is very similar to the Progressbar, except that it displays itself in a gauge form.



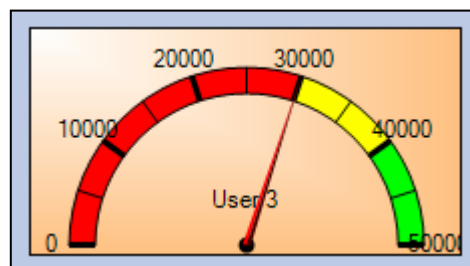
As with other controls, you can adjust properties in the *Properties* window (F4).

Maximum and Minimum Values

The *Maximum* and *Minimum* values are found in the *Behavior* section.

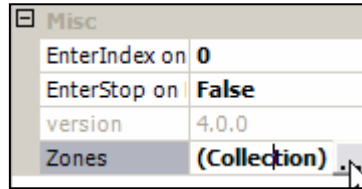
NOTE about changing the Maximum or Minimum values

If you change either of these values, you might need to change the *MajorIndexInterval* and *MinorIndexInterval* otherwise you might end up with a black arc. For instance, if you choose 50000 for maximum value, make the *MajorIndexInterval* 10000 and the *MinorIndexInterval* 5000.

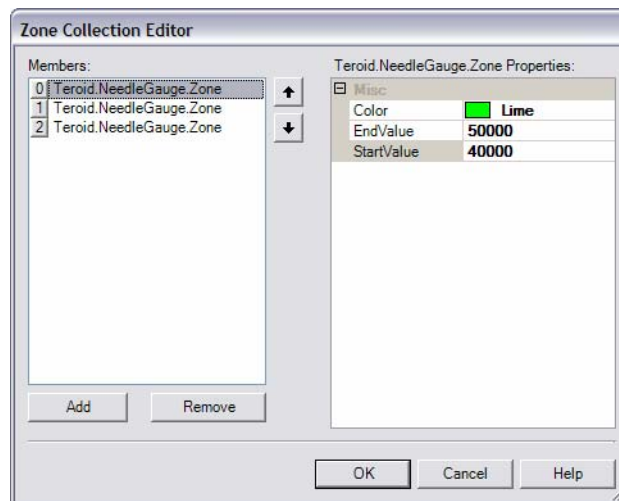


Color zones

To change the colors of the different zones (shown here in red, yellow and green), click the Browse button of the *Zones* property (under *Misc*).



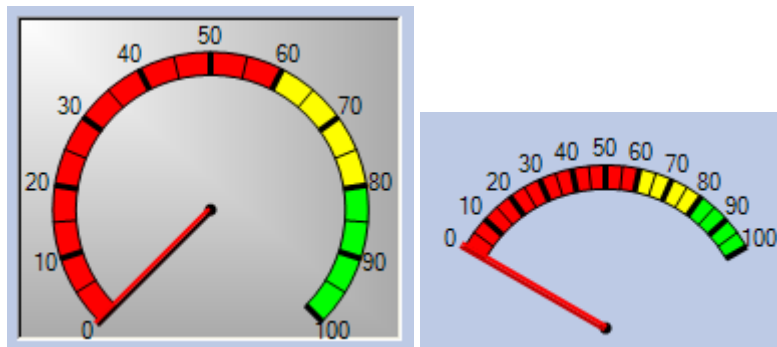
In the *Zone Collection Editor*, you will be able to add as many zones you need and define a *Color*, *StartValue* and *EndValue* for each.



Modifying the appearance of the Gauge

There are many other properties that you can change to modify the appearance of the gauge. There are 2 needle styles, 2 gauge shapes.

You may also want to adjust the *SweepAngle* which is in the *Behavior* category. It controls the angle through which the needle can move. Valid values go from 20 to 270. Below are shown values 270 and 120 (also to mimic the appearance of the second gauge, put the *BackColorBottom* and *BackColorTop* to *Transparent* and the *BorderStyle* to *None*).



Registering your product

To continue using this product passed the trial period, please buy a license at www.exponenciel.com. Licenses are issued for one ACT! username and will only work for that username.

Once you get a license code, right-click one of the controls of the pack in your layout and select *About..* Once the *About* screen is open, type the registration code in the appropriate box and click OK. You might need to close and restart ACT! to complete the registration process.

Support

For support, contact support@exponenciel.com.

Rev. December 19, 2004 – v. 4.0